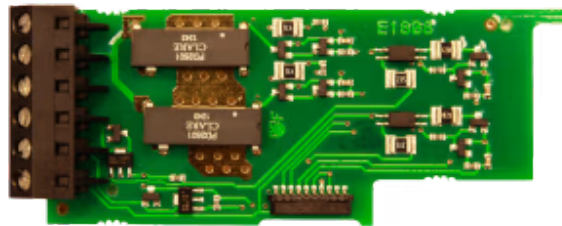




Dual Triac/Dual SSR Drive Setpoint Output Card for PAX

Item number: PAXCDS50

Designed exclusively for use with PAX units. The Triac outputs feature isolated zero-crossing detection, supporting a maximum load of 1A at 25°C and operating within a voltage range of 20 to 260 VAC. It provides two isolated sourcing PNP transistor outputs, delivering 18–24 VDC (unit dependent) with $\pm 10\%$ accuracy and supporting a combined output current of up to 30 mA.



Features and benefits

Dual Triac/Dual SSR Drive Setpoint Output Card for PAX



General	
Net Weight (g)	0.1
Packed Weight (g)	0.1
Warranty (years)	2
Identification and Status	
Product ID	PAXCDS50
Country of Origin	United States of America (the)
HS Code	9032900090
Dual Usage	No
Physical Features	
SD Card Slot	Yes
Flash Drive	No
Contains Battery	No