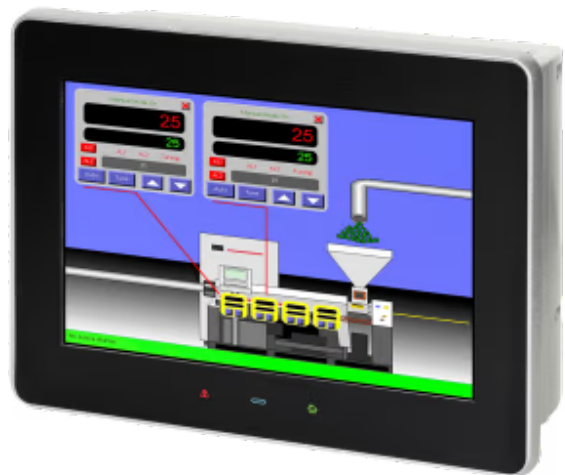




## Graphite® Rugged Outdoor 7" HMI

Item number: G07S0000

The Graphite® Rugged Outdoor 7" HMI connects, monitors and controls processes in any environment with the industry-leading touchscreen operator panel. These advanced HMIs offer protocol conversion, data logging, web-based monitoring and IEC 61131 programming control. Add I/O and functionality with expansion racks and plug-in modules.



*All-aluminum construction featuring sunlight readable HMI panels*

### Features and benefits

- ✓ **Easy to read screen both indoors and outdoors**  
Sleek, full-color, resistive analog touchscreen with UV protective overlays. Sunlight readable outdoors.
- ✓ **Rugged design for every environment**  
Rugged, cast-aluminum housing is designed to operate reliably in harsh conditions and temperatures from -20° to 60°C. Built with high shock and vibration tolerance. Certified for hazardous locations.
- ✓ **Ethernet, serial and USB ports**  
Devices come standard with 1 Ethernet port, 2 RS-232 and 1 RS 485 serial ports, 1 USB device and 2 USB Host ports.
- ✓ **Email and SMS alerts**  
Keep operators informed of machine and process performance with email or SMS notifications.
- ✓ **Crimson® Control programming**  
Develop logic control easily. Simply add a plug-in Crimson Control module and leverage industry-standard IEC 61131 programming languages.
- ✓ **Compact and easy to install**  
An HMI with a compact footprint for easy installation. Available as a 7 inch wide screen display.
- ✓ **Seamless connectivity for 300+ industrial drivers**  
Unify multiple-vendor applications and network-enable equipment with drag and drop simplicity. Convert up to 20 protocols at once from a built-in library of over 300 supported drivers.
- ✓ **Built-in data logging and remote access**  
An SD card provides built-in, continuous data logging and the visibility you need to support process improvements. In-built web and FTP servers provide remote monitoring and control capability.
- ✓ **Unparalleled expansion capabilities**  
Choose from a wide range of field-installable plug-ins to seamlessly extend your capabilities. Modules include PID controllers, digital and analog I/O, RTD, and strain gage modules.

# Graphite® Rugged Outdoor 7" HMI



## General

Net Weight (g)	0.01
Packed Width (mm)	254
Packed Height (mm)	133.35
Packed Depth (mm)	304.8
Packed Weight (g)	1021.01
Operating Temperature °C Min	-20
Operating Temperature °C Max	60
Storage Temperature °C Min	-20
Storage Temperature °C Max	70
Relative Humidity	0 to 85% max. RH non-condensing
Power Consumption (W)	15
Input Voltage (V)	10-30 VDC
Maximum Installation Altitude (m)	2000
Mounting	Panel mount
Panel Cut-Out Dimensions	7.060" (179.3 mm) x 4.869" (123.7 mm)
Housing Materials	Aluminium
Front Sealing	Type 4X Outdoor Enclosure rating
Back Sealing	IP20
Packaging Material	Cardboard

# Graphite® Rugged Outdoor 7" HMI



## General

Warranty (years)	2
------------------	---

## Identification and Status

Product ID	G07S0000
Country of Origin	United States of America (the)
HS Code	8537109199
Dual Usage	No
Export Control Classification Number (ECCN)	EAR99

## Physical Features

Connectors / Input / Output	Terminal, 2x RS232, 1x RS422/485, 1x RJ45, 1x USB Type B
SD Card Slot	Yes
Flash Drive	Yes
Contains Battery	No

## Display Features

Display Size	7"
Display Type	Resistive analog
Pixels	800 x 480
Colors	WVGA, 16M
Backlight Type	LED
Backlight Life Time (Typical)	40000 Hours
Backlight Brightness	1000 cd/m2

## Certifications and Standards

Protection Class IP	IP66
RoHS Compliant	Yes

# Graphite® Rugged Outdoor 7" HMI



## Certifications and Standards

CE	Yes
FCC	No
UKCA	Yes
UL	Yes
ATEX	Yes
DNV	No
KC	No
Vibration and Shock	IEC 68-2-27: Operational 40 g; IEC 68-2-6: Operational 5-500 Hz, 4 g