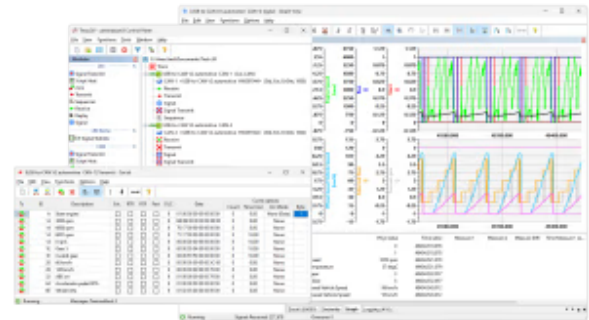




## canAnalyser 3 Standard

Item number: 1.12.0133.31000

The canAnalyser is a versatile tool for the development, testing and servicing of CAN, CAN FD and LIN based systems. The software package is based on a modular concept and available in three versions (mini, lite and standard) with a different set of functions and modules.



*Multi-purpose analysis tool for CAN/CAN FD and LIN based systems*

## Features and benefits

- ✓ **All-around functionality**  
From simple analysis to complex emulation, canAnalyser serves all levels of application needs.
- ✓ **Simple configuration**  
Create measurement configurations with a few clicks thanks to a clear tree structure.
- ✓ **Database integration**  
CANDb, FIBEX, LDF, and DIM imports enhance signal interpretation and display.
- ✓ **High precision**  
Objects received are timestamped with up to 1  $\mu$ s accuracy, depending on hardware.
- ✓ **Passive mode option**  
Analyze without impacting connected CAN systems for unobtrusive diagnostics.
- ✓ **Customizable layouts**  
Arrange and switch between window layouts with shortcut keys for an efficient analysis setup.
- ✓ **Intuitive analysis**  
Easy error analysis with long-term recording, adaptable triggers, and filters for pinpoint accuracy.
- ✓ **Visual statistics**  
Direct graphical display of bus load and error frames alongside database signals for immediate insight.
- ✓ **Comprehensive support**  
Compatible with all Ixxat PC interfaces for CAN networks, including CAN with 11 and 29 bit identifiers, as well as CAN FD.
- ✓ **Offline capability**  
Perform analysis without a bus interface, enabling flexibility in various work environments.



## General

Net Weight (g)	610
Packed Width (mm)	26
Packed Height (mm)	6
Packed Depth (mm)	24
Packed Weight (g)	755

## Identification and Status

Product ID	1.12.0133.31000
Country of Origin	Germany
HS Code	8473302000
Dual Usage	No
Export Control Classification Number (ECCN)	EAR99

## Physical Features

Contains Battery	No
------------------	----

## Certifications and Standards

ETIM Classification	EC000757
---------------------	----------