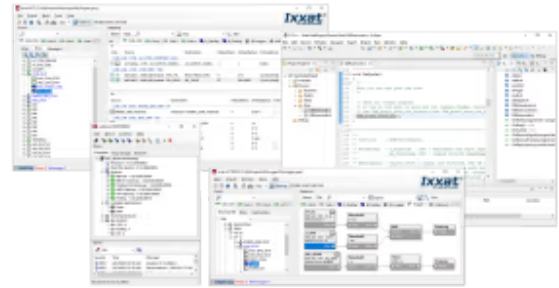


## Advanced Configuration Tool Lite

Item number: 1.12.0248.00000

The Advanced Configuration Tool (ACT) is a powerful and easy to use PC software package for Windows versions 10 and 11. The tool is used to create configurations for the CANnector and FRC-EP devices. After having created such a configuration, it is downloaded to the device and being executed there standalone.



*Configuration software for Ixxat FRC-EP170, FRC-EP190 and CANnector*

### Features and benefits

- ✓ **Intuitive management**  
Easy device management with drag-and-drop and graphical configuration elements.
- ✓ **Comprehensive format support**  
Compatible with common database formats like DBC, LDF, Fibex, and ARXML for signal interpretation.
- ✓ **Independent operation**  
Configurations created can be downloaded and run independently on devices.
- ✓ **Visual data analysis**  
Offers signal visualization functionality and websockets support for real-time data analysis.
- ✓ **Development support**  
Comes with IxAdmin, Vehicle Editor, and Gateway among other development tools.
- ✓ **Flexible extensions**  
Offers the capability to extend functionality with C user code or Matlab/Simulink.
- ✓ **Versatile configuration tool**  
Serves all use cases and hardware devices, like FRC-EP and CANnector, with an easy upgrade path to more advanced versions.
- ✓ **Extensive protocol support**  
Includes FlexRay, CAN, CAN FD, LIN protocol support, and more for diverse automotive testing.
- ✓ **Seamless integration**  
A special EtherCAT extension for FRC-EP 190 and CANnector devices enhances connectivity.
- ✓ **Multi-license use**  
A USB licensing dongle allows use across multiple PCs, adding convenience for team environments.



## General

Net Weight (g)	20
Packed Weight (g)	20

## Identification and Status

Product ID	1.12.0248.00000
Country of Origin	Germany
HS Code	8517620000
Dual Usage	No
Export Control Classification Number (ECCN)	EAR99

## Physical Features

Contains Battery	No
------------------	----