



## Industrial Network Controller and Edge Gateway



FlexEdge® Intelligent Edge  
Automation Platform,  
powered by Crimson®  
Configuration Software





# All-in-one edge platform



## Unmatched data access, maximum flexibility and easy protocol conversion

FlexEdge® lets organizations take full control of their industrial data. Easy to configure and customize across a broad range of industrial applications, FlexEdge provides a secure and scalable bridge between current automation platforms and legacy production systems. FlexEdge is the ultimate Edge device. Configured with Red Lion's proprietary Crimson software, FlexEdge combines powerful data access capabilities with proven network security features. A modular hardware design plus intuitive programming tools enable faster, easier deployment between legacy and newer equipment.

# Unmatched data access

With FlexEdge, industrial network operators gain the power to quickly move critical data to cloud-based IIoT systems and securely access remote assets for maintenance and technical support.

## Enterprise visibility

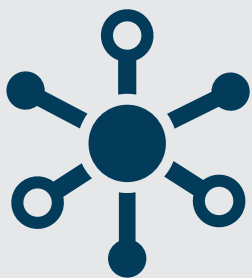
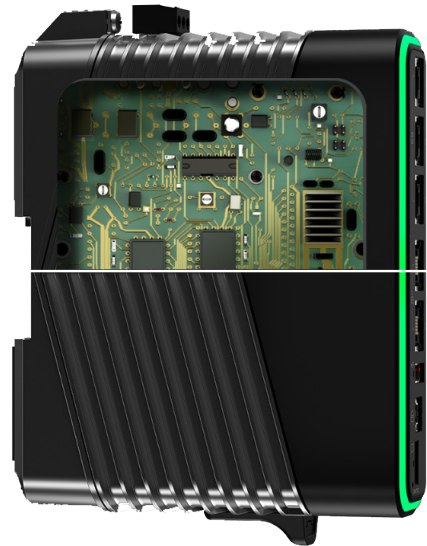
Connect existing equipment's legacy protocols to open standards such as OPC UA and MQTT.

## Cybersecurity features

Help keep data and networks secure with stateful firewall, access control lists (ACL), packet filtering, VPN connections and RADIUS authentication.

## Rugged hardware

Ensure reliable operation in harsh and hazardous environments with -40 to 75° C operational range and HazLoc, UL Class 1, Division 2 and ATEX/IECEX, ABS certifications.



## FlexEdge: Move and monitor data across your enterprise

Engineered for unmatched flexibility and versatility, FlexEdge is the ultimate Edge computing platform. Customize your FlexEdge solution to move and monitor data across the enterprise through multiple applications.



# Maximum flexibility

The name says it all. Modular hardware and software give users flexibility at the Edge, empowering users to build and adapt solutions to fit their changing application needs. One device with numerous automation and network configuration options combined with scalable I/O eliminates the need for in-house expertise across multiple fixed-function systems that require organizations to learn multiple software and hardware platforms. FlexEdge is an all-in-one protocol converter, router, cellular gateway and more, able to replace multiple hardware devices in an application.

## Adaptability

Support different functions (networking gateway, protocol converter or advanced IIoT controller) with a single device. FlexEdge's field-upgradable software allows the device to adapt with evolving networks and applications.

## Modularity

Build and evolve your system your way. Scalable design enables up to 10 hot-swappable I/O modules and supports various I/O options, including high-density analog, discrete, PID, relay, SSR, high speed rate counter and strain gauge modules. Keeping pace with technology trends has never been easier.

## Compatibility

Connect your existing equipment easily with FlexEdge's suite of up-to-date drivers. Seamlessly communicate with major automation platform providers.

## Connectivity

Customize systems easily to meet new connectivity requirements or standards. Plug-and-play up to three communications sleds to the FlexEdge gateway, including dual-SIM cellular, Wi-Fi, Ethernet, serial and USB connectivity.

### Red Lion by HMS Networks

*FlexEdge embodies the value of partnering with Red Lion By HMS Networks. The modular platform is easy to use and allows industrial organizations and systems integrators an opportunity to standardize on one platform to realize success at every stage of their IIoT journey.*





# Powerful, low-code software

Red Lion's proprietary Crimson software is a robust, all-in-one programming environment that enables faster access to industrial data. It is a powerful and flexible platform able to convert up to 20 protocols from over 300 supported drivers. For applications requiring more advanced computing, Crimson also offers a C-like programming environment and IEC61131 programming language support.

## User friendly

Simplify device and network setup with an easy configuration tool and low to no-code programming. Follow a straightforward, step-by-step process to configure communications protocols and cloud connectivity.

## Fast setup

Establish communications quickly between any equipment with Crimson's extensive device driver library and drag- and-drop configuration.

## Robust security features

Loaded with security features to help protect the system from unauthorized access: encrypted communication, password policies, RADIUS authentication, and built-in firewall.

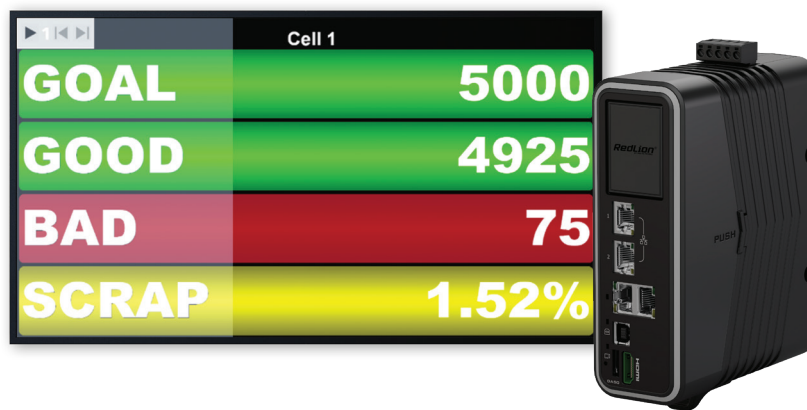


## Crimson: Faster and easier system configuration

Easier and faster system configuration lets users access data faster so they can start making productivity and operational efficiency gains. Connect your Crimson-powered FlexEdge to an SQL server or to the cloud using MQTT to deliver your data efficiently to enterprise data mining and analytical tools. Leverage data to increase productivity, reduce downtime and perform predictive maintenance.

# FlexEdge with HDMI: transform data into action

FlexEdge with HDMI, powered by Red Lion's Crimson software, lets you create real-time productivity scoreboards quickly and effortlessly. Utilize the onboard HDMI port and the Crimson user-friendly configuration capabilities to develop and deploy customized dashboards to a smart TV. Adapt the displays to meet your specific requirements using Crimson's advanced programming capabilities.



FlexEdge with HDMI gives you easier, more powerful ways to access and visualize your industrial data:

- Directly collect data from devices such as PLCs, drives, bar code scanners and more. Map data to PLCs, PCs and SCADA systems with a simple no-code and drag-and-drop interface to allow a Siemens® PLC to communicate with an Allen Bradley® drive in mere seconds.
- Use the built-in graphics library, with over 5,000 drag-and-drop elements to visually represent your application, including tanks, gauges and other industrial graphics choices.
- Sync your data to FTP servers and MS SQL Server to send information where it needs to go.
- Set up alerts for important events using the built-in mail manager, which sends notifications to one or more specified recipients via email with attached report or logged data files.
- Use the built-in Cloud Connectors to link your productivity application data to one or multiple cloud providers, including Azure, AWS, Cumulocity, Sparkplug, Aveva or other MQTT brokers.



# Networking gateway today, advanced IIoT controller tomorrow

FlexEdge is the ultimate Edge device: Field upgradeable software lets users unlock additional functionality from protocol conversion to IIoT connectivity on existing hardware. Upgrading your application from a gateway to a controller has never been easier.

|                     | Networking Gateway | Protocol Gateway | Advanced IIoT Gateway | Automation Gateway |
|---------------------|--------------------|------------------|-----------------------|--------------------|
| Configuration       |                    |                  |                       |                    |
| Web GUI             | ✓                  | ✓                | ✓                     | ✓                  |
| Crimson             | ✓                  | ✓                | ✓                     | ✓                  |
| Networking          |                    |                  |                       |                    |
| Firewall            | ✓                  | ✓                | ✓                     | ✓                  |
| RADIUS Auth.        | ✓                  | ✓                | ✓                     | ✓                  |
| Routing             | ✓                  | ✓                | ✓                     | ✓                  |
| NAT                 | ✓                  | ✓                | ✓                     | ✓                  |
| IP Fallback         | ✓                  | ✓                | ✓                     | ✓                  |
| VPN Client/Server   | ✓                  | ✓                | ✓                     | ✓                  |
| Automation          |                    |                  |                       |                    |
| 300+ Drivers        |                    | ✓                | ✓                     | ✓                  |
| IIoT Connectors     |                    | ✓                | ✓                     | ✓                  |
| OPC UA              |                    | ✓                | ✓                     | ✓                  |
| SQL Sync            |                    |                  | ✓                     | ✓                  |
| Data Logging        |                    |                  | ✓                     | ✓                  |
| Virtual HMI         |                    |                  | ✓                     | ✓                  |
| Advanced Web Server |                    |                  | ✓                     | ✓                  |
| IEC Control         |                    |                  |                       |                    |
| Crimson Control     |                    |                  |                       | ✓                  |

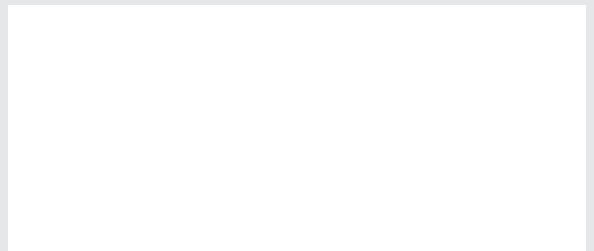


Work with HMS.  
The number one choice for  
Industrial ICT - Information and  
Communication Technology.

## HMS Networks - Contact

HMS is represented all over the world.  
Find your nearest contact here:

[www.hms-networks.com/contact](http://www.hms-networks.com/contact)



© 2025 HMS Networks, Inc. All Rights Reserved. The terms Red Lion, the Red Lion logo, Crimson, N-Tron, and FlexEdge are trademarks or registered trademarks of Red Lion Controls. All other marks are the property of their respective owners. The terms HDMI, HDMI High Definition Multimedia Interface and the HDMI Logo are trademarks or registered trademarks of HDMI Licensing Administrator, Inc. All other company and product names are trademarks of their respective owners.

Part No: ADLD0499. The content of this document may be updated as required.



[www.hms-networks.com](http://www.hms-networks.com)