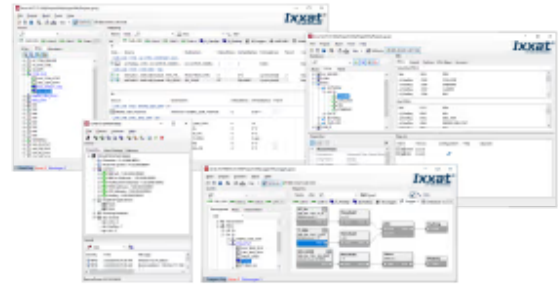


Advanced Configuration Tool Standard

Item number: 1.12.0248.00001

The Advanced Configuration Tool (ACT) is a powerful and easy to use PC software package for Windows. The tool is used to create configurations for the CANnector and FRC-EP devices, including rest bus simulation (RBS) functionality. After having created such a configuration, it is downloaded to the device and being executed there standalone.



Configuration software for Ixxat FRC-EP170, FRC-EP190 and CANnector

Features and benefits

- ✓ **Versatile automotive testing**
Offers sophisticated testing for bus systems and devices with FRC-EP and CANnector hardware integration.
- ✓ **Custom code integration**
Enables the implementation of user-specific code for tailored testing scenarios.
- ✓ **Data logger functionality**
Features data logging functionality, enhancing diagnostic capabilities.
- ✓ **Cost-effective test systems**
Provides a low-cost, high-performance test system setup with a wide functional range.
- ✓ **Signal manipulation**
Includes extensive signal manipulation functions for comprehensive testing and diagnostics.
- ✓ **Advanced simulation**
Supports complex Residual Bus Simulation and gateway applications via Matlab/Simulink.
- ✓ **Comprehensive interface support**
Includes interfaces for CAN, CAN FD, FlexRay, LIN, EtherCAT, and Automotive Ethernet.
- ✓ **HTML5 data visualization**
Allows powerful data visualization on tablets and smartphones for convenient analysis.
- ✓ **Testing environment for electronic control units**
The ACT Standard version offers an easily configurable environment for independent electronic control unit (ECU) testing.



General

Net Weight (g)	20
Packed Weight (g)	20

Identification and Status

Product ID	1.12.0248.00001
Country of Origin	Germany
HS Code	8517620000
Export Control Classification Number (ECCN)	EAR99
Supply Risk Factor ERP	Used in Volume 01

