



Case Study: Remote data

Customer: CapitalAI

Country: North Sydney, Australia

Solution: Real-time data collection



Benefits

- Real-time data monitoring
- Predictive maintenance and reduced downtime
- Robust security protocols to protect data and devices
- Ease of integration with existing systems



"Ewon products offer unrivalled connectivity and real-time data insight, transforming industrial operations into a highly efficient, predictive and data-driven power plant."

- **Dr. Mohanad Sarhan**, Principal Technologist at CapitalAI

Breaking down the barriers between artificial intelligence and industry with Ewon Flexy

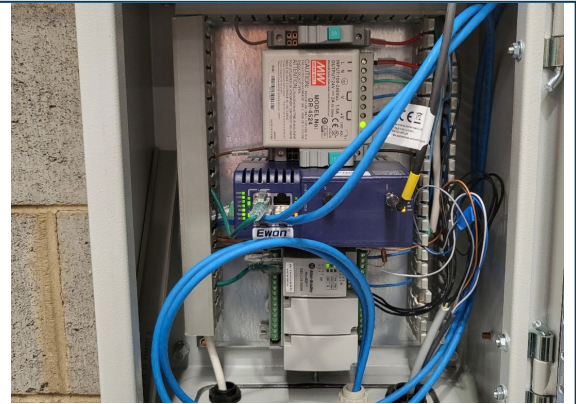
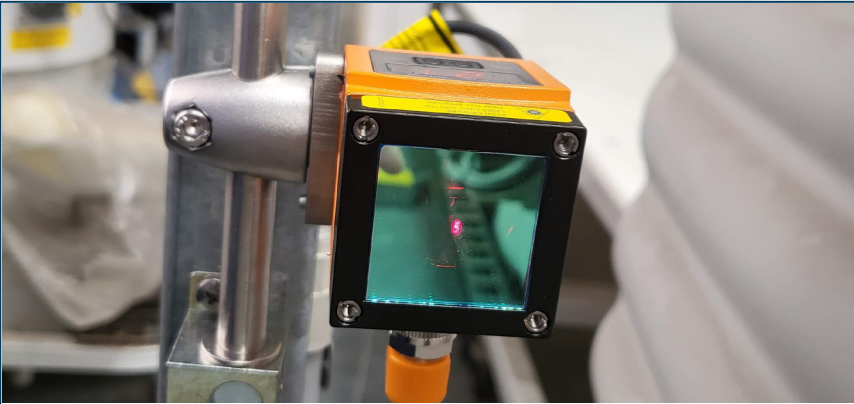
CapitalAI's goal is to put artificial intelligence at the service of operational technologies. For this Australian company, the Industrial Internet of Things (IIoT) represents the future of industry. Enabling machines to communicate to optimize processes, boost productivity and reduce operating costs is also the mission of Ewon by HMS Networks. Our collaboration could therefore only be fruitful.

Data collection: the cornerstone of predictive maintenance

CapitalAI's interest in Ewon's solutions arose from the challenges of remotely monitoring its customers' machines and collecting data in real time. "The main problem we wanted to solve was the lack of connectivity and visibility of machine performance," explains Dr. Mohanad Sarhan, Principal Technologist at CapitalAI. "This was effectively hampering our ability to perform predictive maintenance and optimize operations."

Security, reliability, ease of integration: the qualities of Ewon Flexy

"We chose Ewon because of its robust connectivity solutions, ease of integration with existing systems, and reliable data transmission capabilities", continues Dr. Mohanad Sarhan. "Ewon's ability to seamlessly publish data to our NexAI platform via LAN was a key deciding factor."



Connecting a laser distance sensor to an Ewon HMS gateway provides precise, real-time measurement and remote control of machine parts. The gateway collects data via Ethernet/IP and securely transmits it using encrypted MQTT protocols.

The commissioning of Ewon Flexy has resulted in a significant improvement in machine performance, better OEE visibility and a reduction in unplanned downtime. “In addition, the data collected has reduced maintenance and operating costs”, explains Dr. Mohanad Sarhan. “Ewon products offer unrivalled connectivity and real-time data insight, transforming your industrial operations into a highly efficient, predictive and data-driven power plant.”

Seamless data transmission, even under difficult conditions

“During a project in Brisbane, Australia, we faced a significant challenge with connectivity in a remote manufacturing plant”, explains Dr. Mohanad Sarhan. “Ewon’s robust and reliable gateway solutions enabled us to establish seamless data transmission, ensuring continuous monitoring and control despite the harsh environment.”

In another critical situation, the quick implementation of the Ewon solution resulted in substantial cost savings and increased operational efficiency. “Our team and clients have been highly impressed with the

reliability and performance of Ewon solutions.

CapitalAI intends to strengthen its collaboration with Ewon by HMS Networks

“Currently, we have equipped three critical machines in our manufacturing facility with Ewon units,” describes Dr. Mohanad Sarhan. We plan to expand the deployment of Ewon products across additional machinery and new facilities. This will further enhance our real-time monitoring capabilities and operational efficiencies.”

More about CapitalAI

Based in Sydney, Australia, CapitalAI brings together teams of IIoT experts to boost its customers’ operational intelligence. Objective: to create intelligent connections that collect and analyze big data to modernize and streamline decision-making.

With data delivered to workers in real time, they have the tools to identify and respond to issues as they arise. The result: better processes and a safer, more productive working environment.



Learn more on www.hms-networks.com

Integrate and visualize machine data to gain valuable information and insights into your equipment, whether it’s PLC-based machines, systems, sensors or other industrial devices. This can be done by using Ewon’s full featured dashboards, or by seamlessly providing data to a wide range of third-party applications

