



# Remote Access Starter Kit





# Easily get started with industrial remote access!

Enjoy successful connectivity with all your machines with Ewon Cosy+



## What's in the box

- 1x Cosy+ WiFi (Product number: EC7133J)
- 1x WiFi antenna
- 1x Power supply 12-24VDC (Including EU-UK-US adapters)
- 1x USB key for the Talk2M Easy Setup configuration
- 1x Ethernet cable: connect to LAN device
- 1x Ethernet cable: connect to Internet router

## What I need to start

- Access to power
- Access to Internet (Ethernet or WiFi)
- PC running Windows

## Let's start with the following steps

- 1 Create a Talk2M account
- 2 Create the Cosy+ configuration file
- 3 Configure your Cosy+
- 4 Connect to your Cosy+

# 1 Create a Talk2M account

Talk2M industrial cloud is a reliable and efficient solution for remote connectivity based on a global and redundant server infrastructure. Thanks to Talk2M, you can remotely access your machines.



A Talk2M account is required to get the benefits of your Cosy+.

This account can be created for free directly with the eCatcher software.


Visit [ewon.biz/setup](http://ewon.biz/setup) to download & install the last version of eCatcher on your PC.

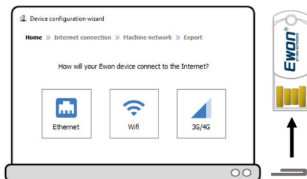
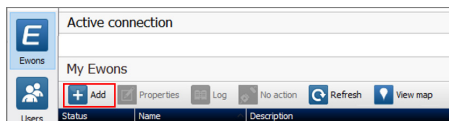
Once started, follow the “Create a Free+ Account” Wizard in the eCatcher login page.



## 2

## Create the Cosy+ configuration file

Open eCatcher and in the “Ewons” tab, click on the  icon to add a new Ewon device. Follow all steps to generate the file and save it on the USB key.

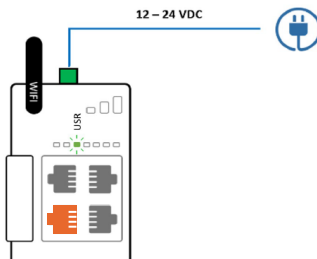


## Prepare your Cosy+ for the next step

Plug the power supply into your Cosy+ using the correct adapter.

The Cosy+ is ready when the USB LED state switches to blinking **GREEN**.

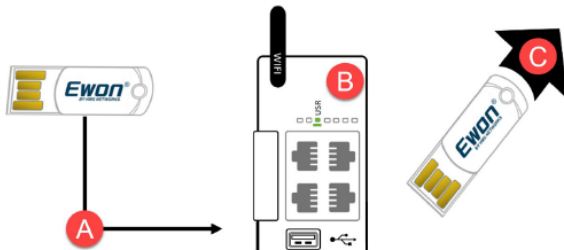
If Internet is provided via Ethernet plug the Internet network cable in the **PORT #4**



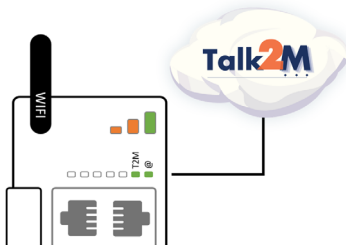
### 3

## Configure your Cosy+

- Insert the USB key into the Cosy+.
- Wait until the Cosy+ USB LED state changes to solid **GREEN**.
- Remove the USB key & wait.



Cosy+ will reboot, configuration will be tested by establishing the connection with the Talk2M services. This operation will take few minutes to be completed.

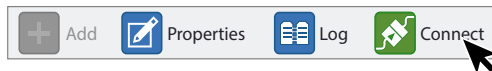


Success will be confirmed by the state of the Talk2M LED (solid **GREEN**) on your Cosy+.

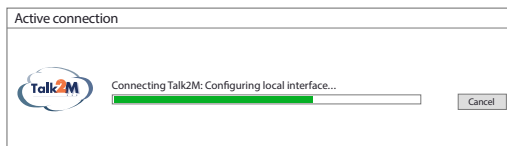
## 4 Connect to your Cosy+

In eCatcher, click on the “Ewons” tab to display your Cosy+.

Select your “Online” Cosy+ and click on the “Connect” button in the top menu.



Thanks to Talk2M, eCatcher will establish a remote connection with your Cosy+.

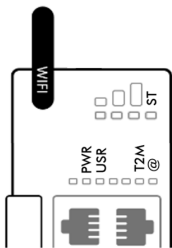


You are now remotely connected to your device.



Go further with your remote access experience and visit: [ewon.biz/setup](http://ewon.biz/setup).

# Cosy+ LED panel



	WiFi Reception signal level
ST	WiFi Connection Status <b>GREEN</b> = Connected to WiFi
PWR	<b>GREEN</b> = Ewon is powered on
USR	Ewon Status - Blinking <b>GREEN</b> = OK <b>ORANGE</b> = Busy / <b>RED</b> = ERROR
T2M	<b>GREEN</b> = Connected to Talk2M Blinking <b>GREEN</b> = User connected
@	<b>GREEN</b> = Internet configured

## Additional configuration

KEY	Physical connectivity restriction and/or Talk2M notifications
DI2	Talk2M notifications

# Cosy+ product line

EC7133J_00MA	Industrial Internet Gateway: Cosy+ WiFi
EC7133O_00MA	Industrial Internet Gateway: Cosy+ Ethernet
EC7133K_00MA	Industrial Internet Gateway: Cosy+ 4G NA
EC7133L_00MA	Industrial Internet Gateway: Cosy+ 4G EU
EC7133M_00MA	Industrial Internet Gateway: Cosy+ 4G APAC

Looking for more documents and how-to videos?

[ewon.biz/setup](http://ewon.biz/setup)

